

PRODUCT DESCRIPTION

PMG™ is a ready-to-use dry polymer grout with the property of increasing volume and It is non-shrinkable due to its special polymeric formulation.

Filling the space between the base plate and the foundation is used. Polymer cementitious grout powder after mixing with water has considerable fluidity. This is the reason why all the sections are molded below the base Plate. Early resistance above 60 MPa, no cracks, surface smooth and high mechanical strength are the characteristics of this product. This type of grout Cement is recommended for use in thicknesses between 20 to 80 mm.

PRODUCT FEATURES

- Improved end characteristics and durability in the compression of conventional cementitious grout.
- Achieve high initial strength and early loading and fast operation
- Good flow characteristic.
- Non-shrinking.
- Excellent impact and vibration resistance.
- Ease of mixing with water and achieving optimal flow

PRODUCT USES

PMG™ is a suitable grout over a wide range of applications including:

- Grouting precision equipment, baseplates, soleplates, and columns.
- Filling the space around the reinforced and anchor bolts
- Precision grouting of machinery like gas turbines, compressors, pumps, lathe and milling machines, etc.

TECHNICAL DATA

Density	~2.2 kg/L
Compressive Strength (28 days)	60 N/mm ²
Final set	24 hours
Pot Life	20 min
Mixing Ratio (Parts A:B) by Weight	water per powder = 16-25 % by weight

HOW TO USE

SURFACE PREPARATION

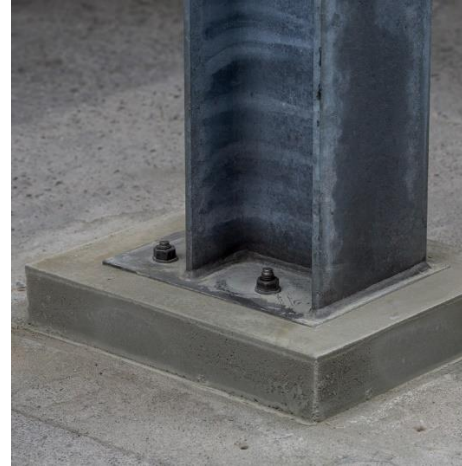
Concrete surfaces should be clean, sound and as oil- and water-free as possible. Excessively damaged concrete should be removed.

MIXING

Mix the PMG™ grout with water. each 25 kg bag of cement grout, between 3,000 and 5,000 cc of water is considered.

Mixing with water is less than 20 minutes and adding any additives should be done with Salehadi and consult with experts.

APPLICATION:



Polymer modified Grout - PMG™

- The mixed grout should be poured steadily from one side only to eliminate the entrapment of air.
- Continuous grout flow is essential.
- Sufficient grout must be available prior to starting.
- The time taken to pour a batch should be regulated to the time taken to prepare the next batch.

HANDLING

Approved personal protection equipment should be worn at all times. Particle mask is recommended for possible airborne particles. Safety glasses are recommended to prevent eye irritation. Wear chemical resistant clothing/gloves/goggles. Ventilate area. In absence of adequate ventilation, use properly fitted respirator.

CLEANUP

Hardened / cured material can only be mechanically removed.

PACKAGING

PMG™ is packaged in 20 kg and 25 kg bags.

STORAGE

9 months after manufacturing date in original unopened sealed bag when stored in dry conditions; high relative humidity will reduce shelf life. Protect from direct sunshine.

FIRST AID

In case of skin contact, wash thoroughly with soap and water. For eye contact, flush immediately with plenty of water; contact physician immediately. For respiratory problems, remove to fresh air. Wash clothing before reuse.

DISCLAIMER OF LIABILITY

AFZIR, LLC warrants its products to be free from manufacturing defects. Buyer determines suitability of product for use and assumes all risks. Buyer's sole remedy shall be limited to replacement of product. Any claim for breach of this warranty must be brought within six months of the date of purchase. AFZIR shall not be liable for any consequential or special damages of any kind, resulting from any claim

PMG™

Polymer Modified Grout

or breach of warranty, breach of contract, negligence or any legal theory.

The Buyer, by accepting the products described herein, agrees to be responsible for thoroughly testing any application to determine its suitability before committing to production.