

PRODUCT DESCRIPTION

Water Resistant Gypsum Powder (WGP™) is a one coat gypsum plaster formulated with special additives for wet areas application.

This "industry-first" combination of WGP™ water resistant, gypsum powder provides a wall and ceiling finishing system that is extremely resistant to the affects continued exposure to water and high humidity.

PRODUCT FEATURES

- One component gypsum-based powder
- Formulated with special additives for wet areas application
- No shrinkage cracks
- Reliable and cost-efficient
- Environmentally friendly, nonhazardous in use and operation

PRODUCT USES

The WGP™ breathable, mold resistant finishing product is perfect for bathrooms, spa rooms, all ceilings and walls, etc. in environments continually exposed to high levels of moisture and constant humidity.

It can be directly used over backgrounds like bricks, blocks, RCC, etc. and provides a smooth inert, high quality surface to walls and ceilings and a durable base for application of decorative finishes.

TECHNICAL DATA

Appearance / Colors	White Powder
Chemical Composition	Calcium Sulphate Hemihydrate
Dry Bulk Density	~700 kg/m ³
Wet Bulk Density	~1.5 kg/m ³
Setting Time	25-35 min
Water To Powder Ratio	1:1.25
Applied Thickness	15 mm
Coverage	2.5 sq.m / 25 kg bag

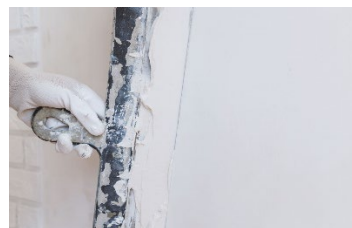
HOW TO USE

SURFACE PREPARATION

- The substrate should be free of dust, grease, loose particles etc.

MIXING

- Water resistant gypsum powder (WGP™) is pre-mixed with aggregate and only clean water needs to be added to prepare it for use.
- Mixing should be carried out in a clean tray or bucket. Water to plaster ratio (1 part of water: 1.25 part of plaster by weight) should be maintained to have good cohesive workable mix.
- Prepare plaster mix as much as required depending upon the immediate scope of work.



Water Resistant Gypsum Powder -WGP™

APPLICATION

- Water resistant gypsum powder (WGP™) should be applied with firm pressure, built out to the required thickness, and ruled to an even surface and left as an undercoat to form a key for finish coat.
- A thin plaster mix is made and applied as a finish coat to provide smooth surface.
- It can be applied to an average thickness range of 6-15 mm on walls in one coat and up to 10 mm on ceilings.
- For thickness above this range, material needs to be applied in two coats.
- After complete drying for usually 72 hrs (depends upon thickness and weather conditions) the plain smooth leveled surface is ready for painting.

PACKAGING

- 25kg bag

STORAGE and SHELF LIFE

- Approx. 3 months from the date of manufacturing when stored in dry conditions.

HANDLING

Gloves are recommended when handling mortars to avoid skin irritation. Safety glasses are recommended to prevent eye irritation. Wear chemical resistant clothing / gloves / goggles. Ventilate area. In absence of adequate ventilation, use properly fitted respirator.

CLEANUP

Dispose of material in accordance with local disposal regulations. Uncured material can be removed with approved solvents. Cured materials can only be removed mechanically.

FIRST AID

In case of skin contact, wash thoroughly with soap and water. For eye contact, flush immediately with plenty of water; contact physician immediately. For respiratory problems, remove to fresh air. Wash clothing before reuse.

DISCLAIMER OF LIABILITY

AFZIR, LLC warrants its products to be free from manufacturing defects. Buyer determines suitability of product for use and assumes all risks. Buyer's sole remedy shall be limited to replacement of product. Any claim for breach of this warranty must be brought within one month of the date of purchase. AFZIR shall not be liable for any consequential or special damages of any kind, resulting from any claim or breach of warranty, breach of contract, negligence or any legal theory.

WGP™

Water Resistant Gypsum Powder

The Buyer, by accepting the products described herein, agrees to be responsible for thoroughly testing any application to determine its suitability before committing to production.